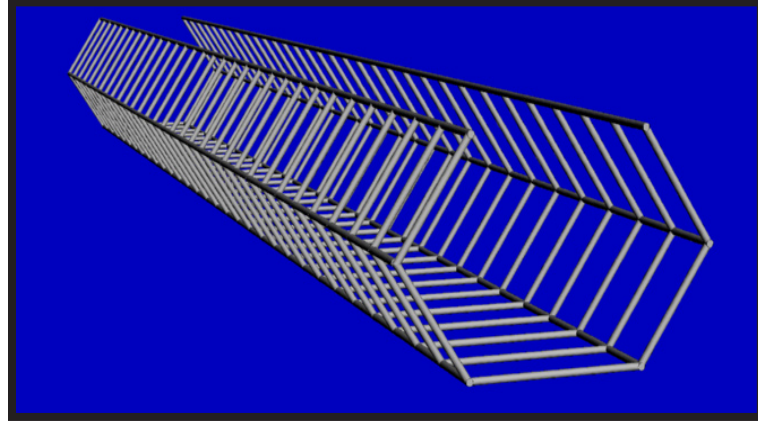


## Strip GUARD

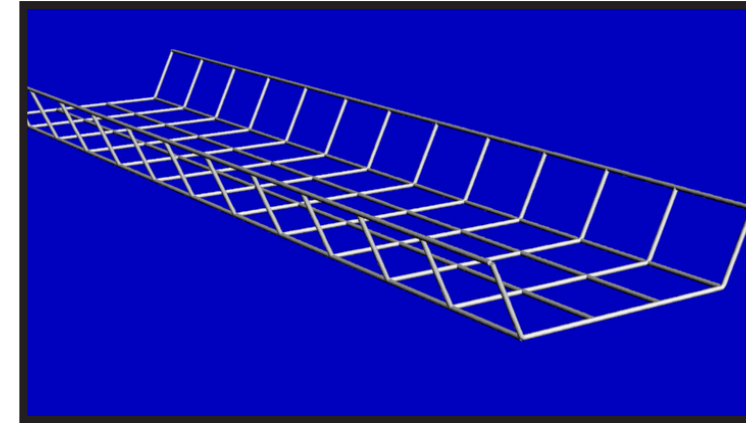
- Attaches To Body With 4 Steel Clips, Which Are Included
- Designed For Strip Fixture
- Other Width Guards Available
- Standard Parts Are 13 Gauge White Or Zinc With 2" X 2.5" Cells



Wg-slg-1-13w            1 light  
Wg-slg-2-13w            2 light

## Reflector GUARD I

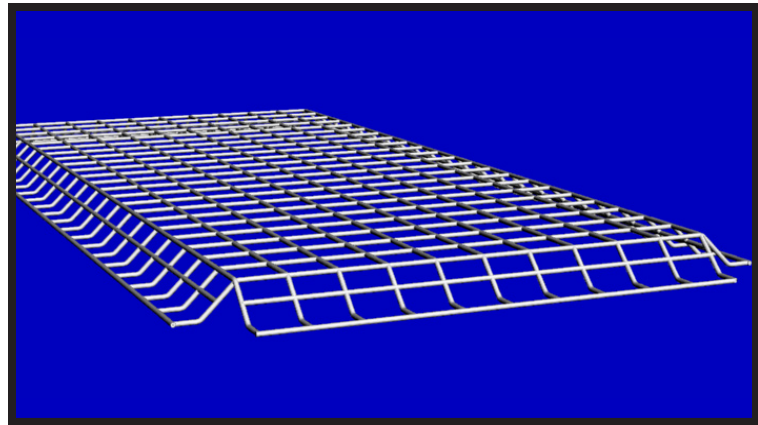
- Designed For Industrial Reflectors
- Heavy 13 Gauge Steel Wire - Zinc Plated with 2"x 2.5" cells
- Attaches With 4 Thumb Screw Hinge Clips



Wg-13z-ref1-8            Wg-13z-ref1-12  
Wg-13z-ref1-9            Wg-13z-ref1-13  
Wg-13z-ref1-10          Wg-13z-ref1-14  
Wg-13z-ref1-11          Wg-13z-ref1-15

## Door Frame GUARD

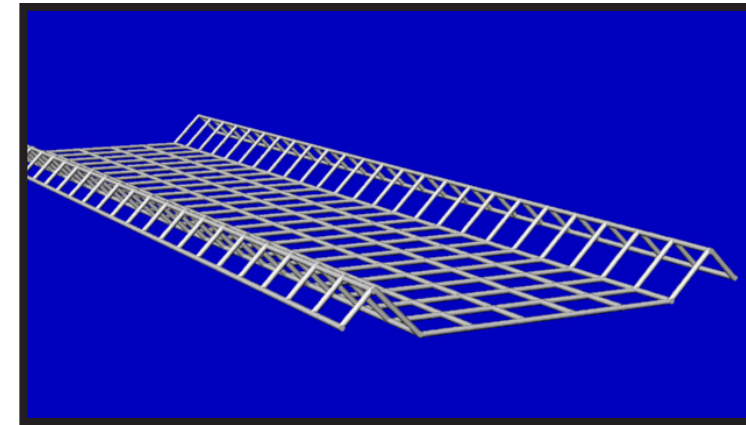
- Designed For Lay-in Troffers
- Heavy 11 Gauge Steel Wire - Zinc Plated With 2" x 2" Cells



Wg-fhb-11x46.5  
Wg-fhb-22.5x22.5  
Wg-fhb-22.5x46.5

## Reflector GUARD II

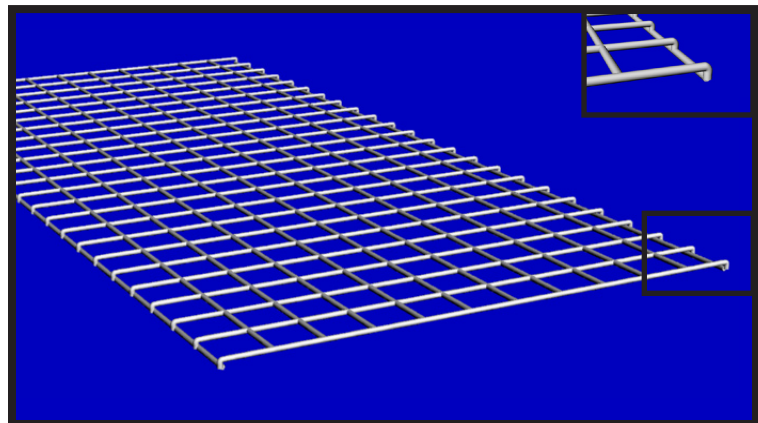
- Designed For Industrial Reflectors
- Heavy 13 Gauge Steel Wire - Zinc Plated With 2" x 2.5" cells
- Attaches With 4 Thumb Screw Hinge Clips



Wg-13z-ref2-8            Wg-13z-ref2-12  
Wg-13z-ref2-9            Wg-13z-ref2-13  
Wg-13z-ref2-10          Wg-13z-ref2-14  
Wg-13z-ref2-11          Wg-13z-ref2-15

## Industrial Wrap GUARD

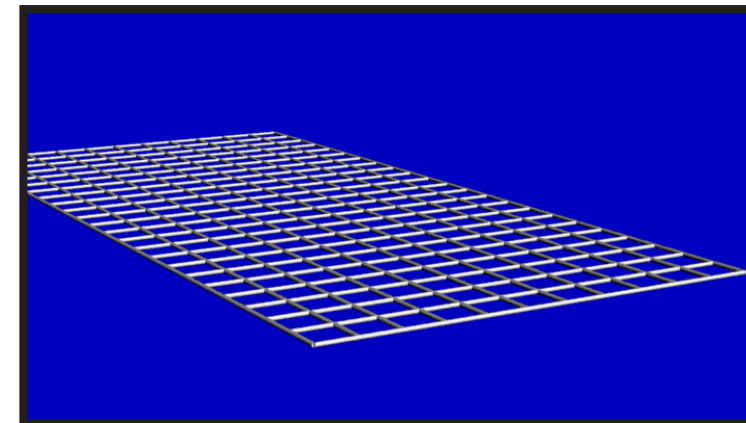
- Heavy 11 Gauge Steel Wire - Zinc Plated With 2" x 2" Cells



Wg-11z-12x48b1    Wg-11z-20x48b1  
Wg-11z-14x48b1    Wg-11z-22x48b1  
Wg-11z-16x48b1    Wg-11z-24x48b1  
Wg-11z-18x48b1    Wg-11z-26x48b1

## Flat GUARD

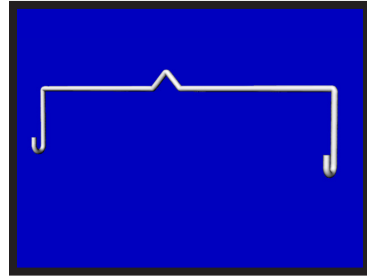
- Designed For Industrial Fixtures
- Heavy 11 Gauge Steel Wire - Zinc Plated With 2" x 2" cells



Wg-11z-12x48f        Wg-11z-22x48f  
Wg-11z-14x48f        Wg-11z-24x48f  
Wg-11z-16x48f        Wg-11z-26x48f  
Wg-11z-18x48f        Wg-11z-28x48f

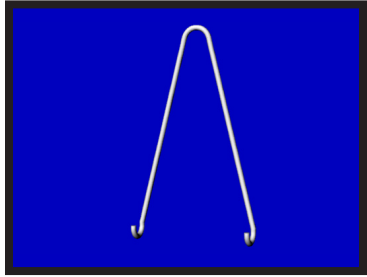
# Hangers

## LH-2



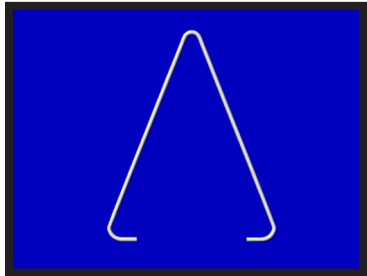
- 12 1/2" L - 2 1/2" H
- V Wire Hanger
- 500/CTN

## SH-1



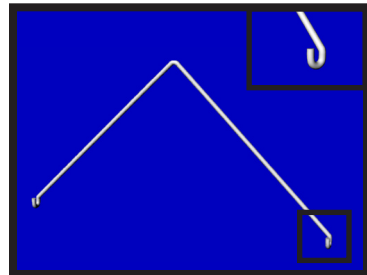
- 2 1/2" L - 4 1/8" H
- Strip Hanger
- 500/CTN

## MH-1



- 3 1/2" L - 4 1/2" H
- Wire Hanger
- 1000/CTN

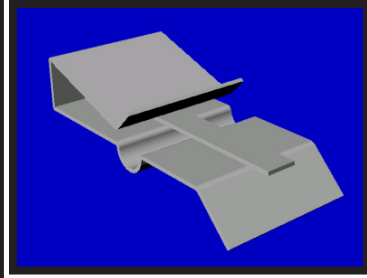
## MH-2



- 7 1/2" H - 12 1/2" L
- Wire Hanger
- 500/CTN

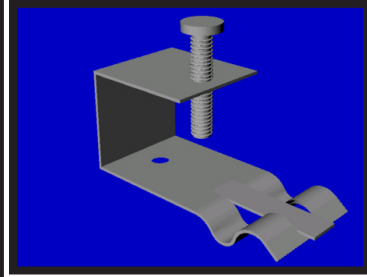
# Clips

## WG-CLIP



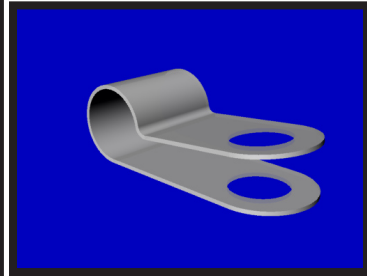
- Standard Strip Clip

## WG-CLIP SCR



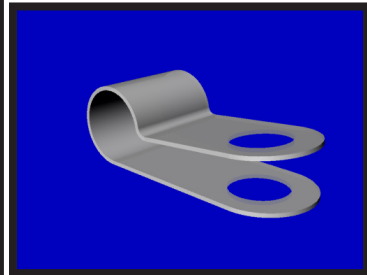
- Clip With Thumb Screw

## WG-CLIP WR



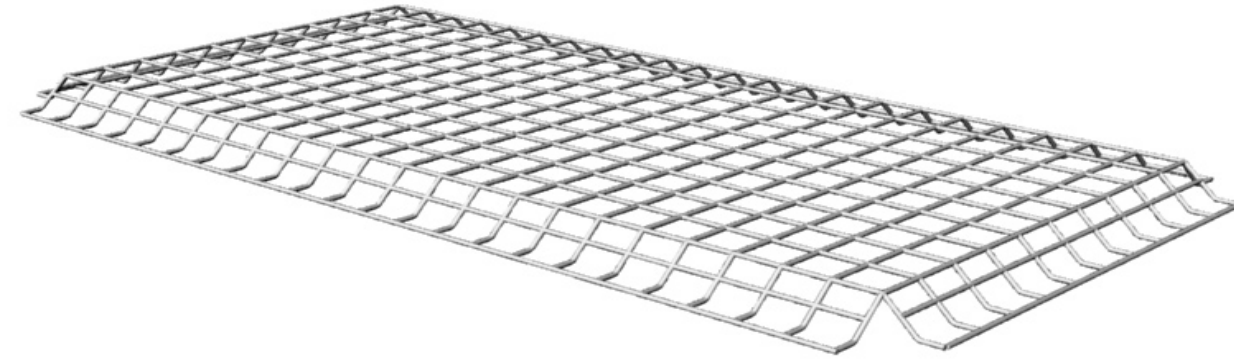
- Steel Clip

## WG-CLIP WRN



- Nylon Clip

# WireGUARDS



## General Information

- Standard Wireguards Are 11 Gauge 2 x 2 Cells of Zinc Plated Steel Wire
- Strips And Refelctors Are Standard 13 Gauge 2 x 2 Cells

## Ordering Information

Finish/length/height of bend  
 ↓ ↓ ↓  
 wg-11z-12x48b1  
 ↑ ↑ ↑  
 ga/width/bend (90 standard)

\* Also available in cumstom sizes