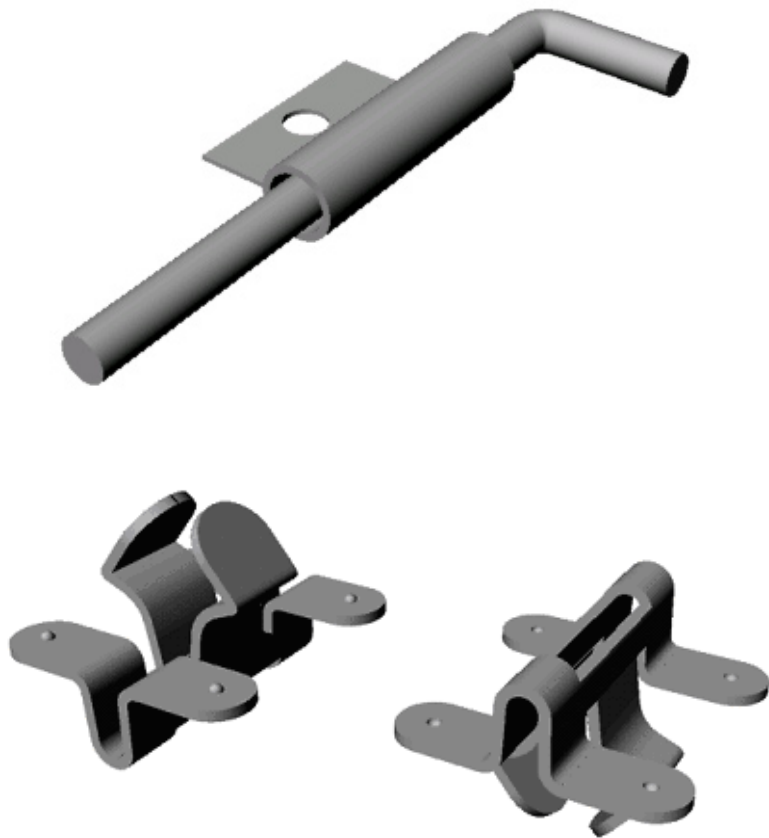


Fasteners

LIGHT LINES



Sales/Manufacturing Office

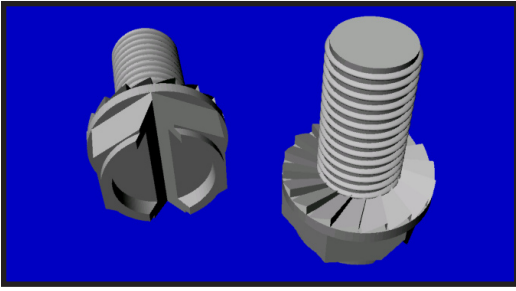
Light Lines, Inc.

3337 Rauch Street
Houston, Texas 77029
713-673-7502 Phone
713-673-4254 Fax
www.lightlines.net

Corporate Offices

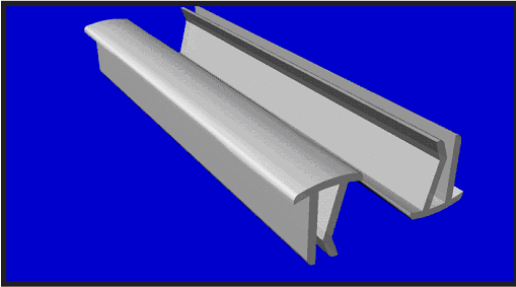
Light Lines, Inc.

3679 Bellegrove Ridge
Marietta, GA 30062
770-578-1700 Phone
770-579-6030 Fax
lightlines@mindspring.com



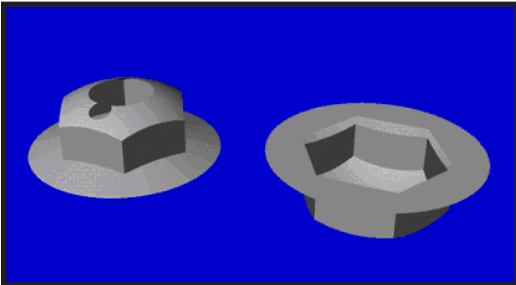
FAS-GGS-1000

- *8/32 x 3/8 Slotted Indente Hex Washer Head, Green Ground Screw*



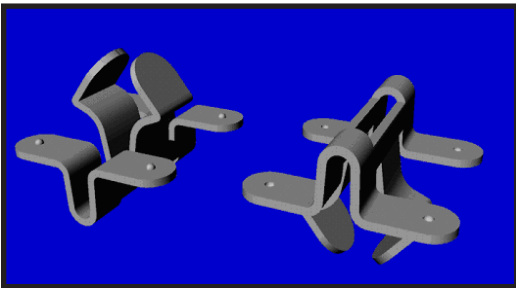
FAS-PAC-1000

- *Clear Polycarbonate Aligner Clip, 2" Long*



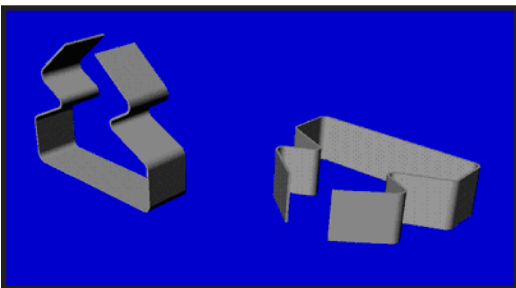
FAS-PAL-NUT

- *8/32 Hex Head Black Pal-Nut*



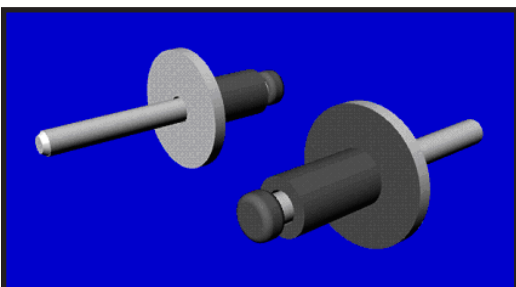
FAS-QTF-1000

- *1/4 Turn Slotted, Zinc Plated Steel Fastener*



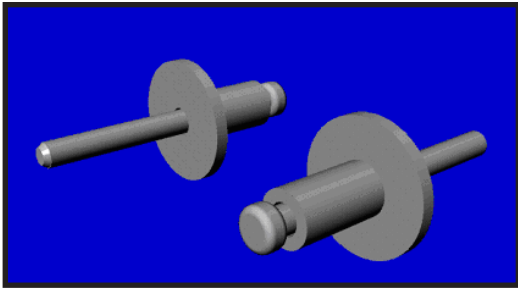
FAS-QTF-3100

- *Wire Form 1/4 Turn Steel Fastener*



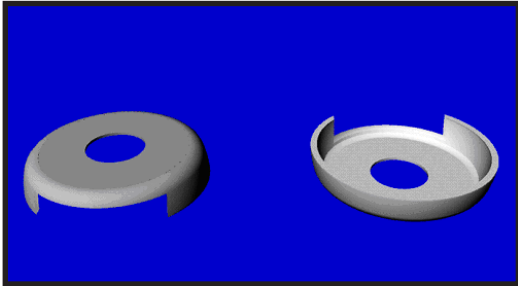
FAS-RIV-SAWW

- *#42 Aluminum, Zinc White Wide Head Shank Rivet*



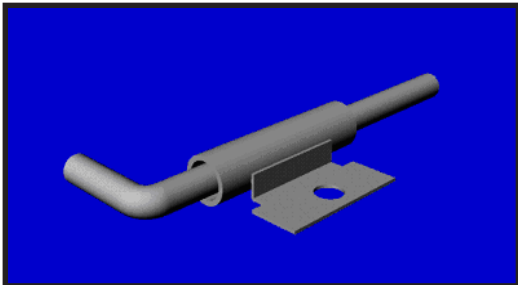
FAS-RIV-SAWZ

- *#42 Aluminum Zinc Wide Head Steel Shank Rivet*



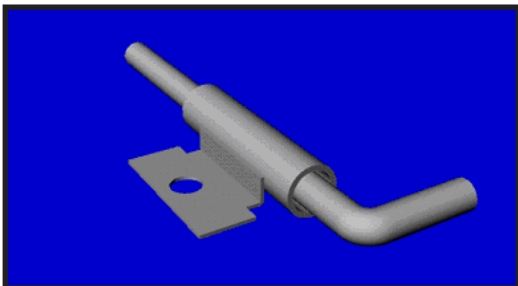
FAS-TCW-1000

- *#8 Zinc Plated Cup Washers*



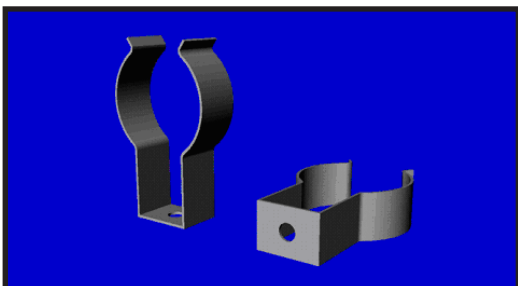
FAS-ZBL-1000LH

- *Steel, Zinc Plated Left Hand Barrel Latch With Hole*



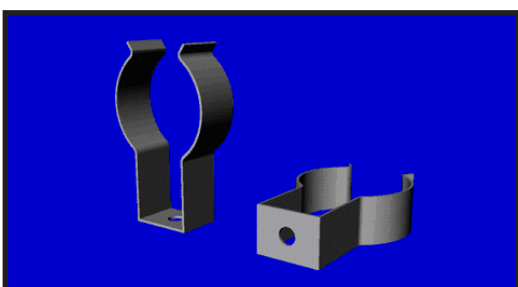
FAS-ZBL-1000RH

- *Steel, Zinc Plated Right Hand Barrel Latch With Hole*



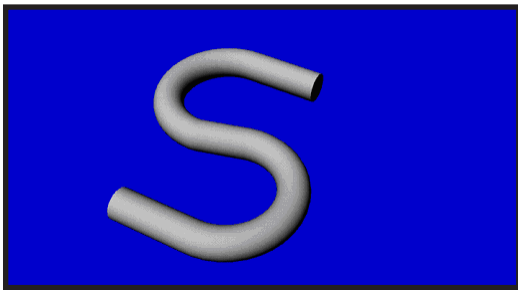
FAS-ULC-1000

- *T-12 Steel, Zinc Plated U-Lamp Clips*



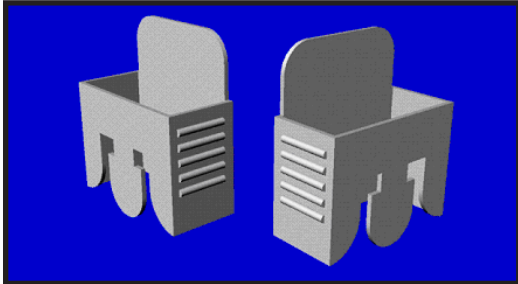
FAS-ULC8-1000

- *T-8 Steel, Zinc Plated U-Lamp Clips*



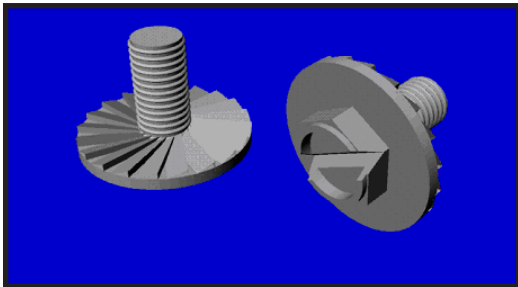
FAS-S-HOOK

- *Steel Zinc Plated S-Hook 10 Gauge, 1 1/4"*



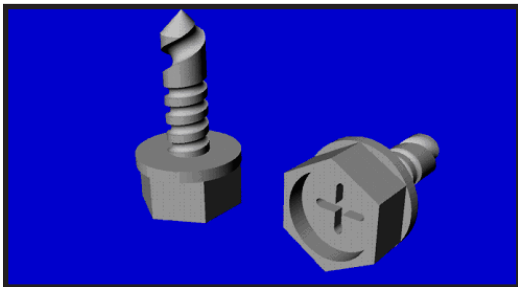
FAS-TL-1

- *Medium Bi-Pin Tube Locks*



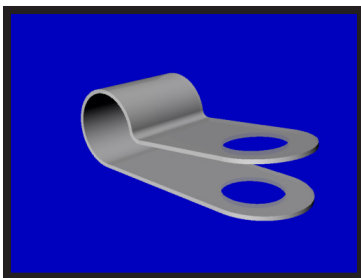
FAS-ZBS-1000

- *8/32 x 5/16 Slotted, Indented Zinc Plated, Hex Head Ballast Screw*



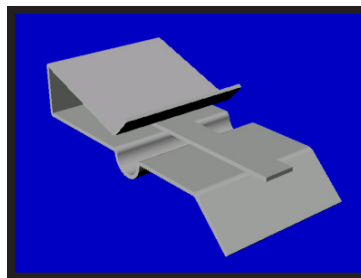
FAS-TEC

- *#8 x 3/8 Tech Screw*



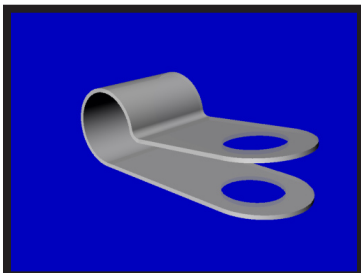
WG-CLIP WR

- *Steel Clip*
- *0.78" L - 0.50" W*
- *Hole - 0.20" D*
- *Hole Center To Back - 0.56"*



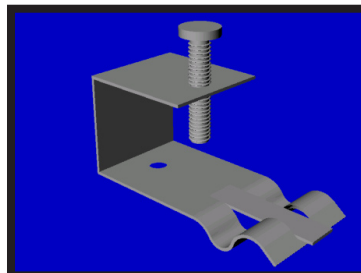
WG-CLIP

- *Standard Strip Clip*



WG-CLIP WRN

- *Nylon Clip*
- *0.78" L - 0.50" W*
- *Hole - 0.20" D*
- *Hole Center To Back - 0.56"*



WG-CLIP SCR

- *Clip With Thumb Screw*